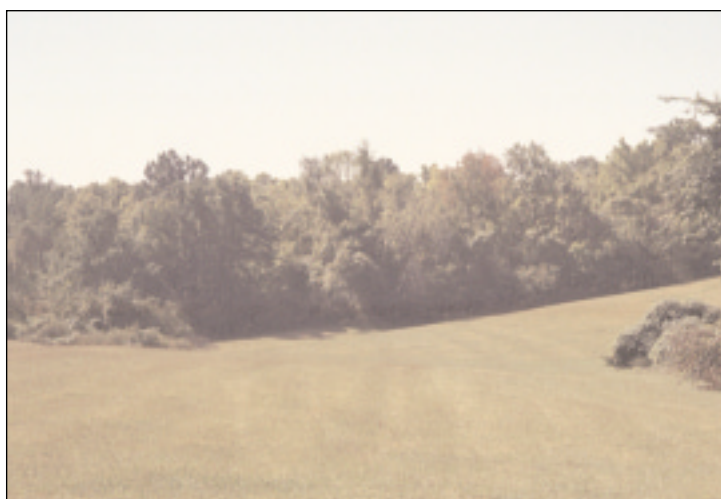


# Maplewoods Pkwy.-Hwy. 210 via Searcy Creek Pkwy.

Construction Priority: Second



This 5.07 mile, off-road, hard surface, shared use trail begins at the Shoal Creek Parkway on the north and continues south through the Searcy Creek Greenway and ends at the Missouri River. This trail for all level of users features one of the most picturesque routes to the Missouri River. Dedicated trails and greenway on either side of the Parkway offers the trail users an experience of stream corridors and a mix of wooded, open space and fertile floodplain views.

## TRAIL EVALUATION

	From	To	Distance	Uses	Trail Type	Trail Surface
Segment 1:	Maplewoods Parkway	Vivion Rd.	3.38	Shared Use	3	Hard Surface
Segment 2:	Vivion Rd.	210 Hwy.	1.69	Shared Use	3	Hard Surface
Total:			5.07			

# Maplewoods Pkwy.-Hwy. 210 via Searcy Creek Pkwy.

