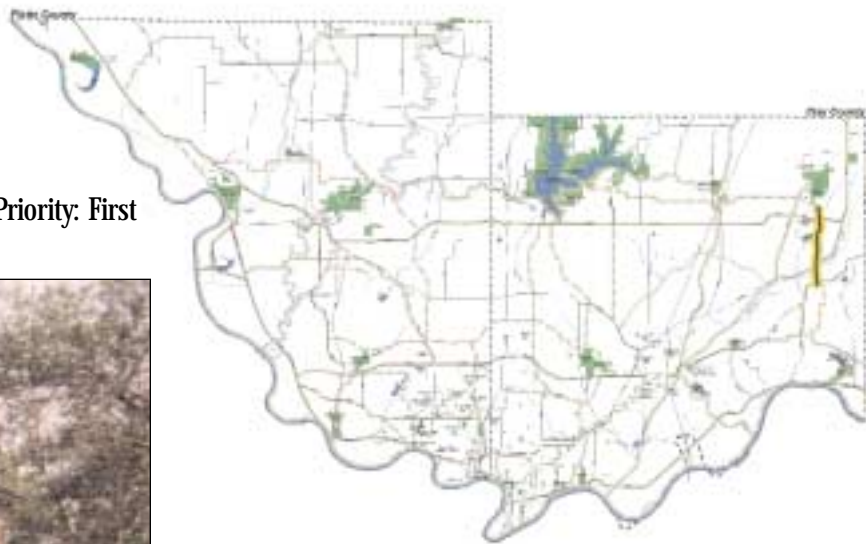


Watkins Mill Park/H Hwy. via Old Quarry Road

Construction Priority: First



This is a 4.55-mile, hard surface, off road shared use trail that runs along Old Quarry Road. It begins at Watkins Mill State Park and runs south to H Highway. Users will experience rolling hills, a stream crossing and connections to Rocky Hollow and Tryst Falls Parks. Traveling south, users are within a few minutes of the historic Pharis Farm.

TRAIL EVALUATION

	From	To	Distance	Uses	Trail Type	Trail Surface
Segment 1:	Watkins Mill State Park	Hwy. 92	.98	Shared Use	3	Hard Surface
Segment 2:	Hwy. 92	Rocky Hollow Park	.77	Shared Use	3	Hard Surface
Segment 3:	Rocky Hollow Park	69 Hwy.	1.92	Shared Use	3	Hard Surface
Segment 4:	69 Hwy.	H Hwy.	.88	Shared Use	3	Hard Surface
Total:			4.55			

Watkins Mill Park/H Hwy. via Old Quarry Road

